



# USER MANUAL



**CCM12-MK3**

**Single 12"**  
Powered Monitor

# TABLE OF CONTENTS

Overview .....	3
Quick Start Guide.....	4
Combining Speakers.....	5
Outboard Processing Warning.....	6
Setup Procedure.....	6
Operation & Controls .....	7
Indicator LEDs .....	8
How to Use the Presets .....	9
Pre-Installed Onboard Presets.....	10
Power Distribution.....	11
Troubleshooting .....	11
Specifications .....	12
Warranty.....	14
Safety Information .....	15
Important Notes .....	16
FCC Compliance Notice.....	16
Manufacturer.....	16

Este manual está disponible en español en nuestro sitio web en [bassboss.com/support](http://bassboss.com/support)

# Overview

---

The CCM12-MK3 is a Compact Coaxial Monitor with a host of features intended for professional performers which also functions as an excellent main or fill monitor for venues with limited space.

**C = Compact** - Small footprint, small frontal area, lightweight. The front of the cabinet is 50% smaller than most 12" monitors that have a separate tweeter horn. This takes up less space on stage, and anywhere else you might want the power of a 12" 2-way monitor. The driver features a Neodymium motor and the class D amplifier has a lightweight, switch-mode power supply. The cabinet is 15mm Birch plywood, which is heavier than plastic, but the strength of the wood allows the cabinet to be made smaller, and sound better.

**C = Co-Axial** - Absolutely consistent coverage pattern, highly resistant to feedback. This co-axial driver delivers an 80-degree conical coverage pattern that is consistent off-axis. The advantage to this is two-fold. First, the consistency allows the performer or listener the freedom to move around within the pattern without the character of the sound changing. Conventional 2-way monitors have the tweeter above, to the side or below the woofer. This results in a different frequency response as you move left to right or forward and back. It's much more difficult to prevent conventional monitors from feeding back because the response peaks change in frequency as you move through their inconsistent patterns, leaving you chasing feedback every time a mic moves. A co-axial is far more consistent no matter where you move, which is better for performers and audiences alike. Aside from delivering a more consistent and intelligible sound field the biggest advantage of the consistency of the symmetrical pattern co-axial monitor is its relative immunity to feedback.

**M = Monitor** - 3 different upward angles plus straight ahead with fly-points and brackets for ceiling and wall mounting. It has 3 different upward angles. The first angle is set up for standing performers who like their monitors at their feet. This is ideal for vocalists with or without instruments who need clear monitors when they step up to the mic and appreciate being able to step back out of the monitor coverage when they want to. The second angle is for seated performers that need the coverage to be aimed a little lower. Whether playing keyboards, drums or slide-guitar, the monitor should be pointed at your head, not over your head. This lower angle can also be used to cover a larger area farther from the monitors, such as for a choir, background vocalists or a horn section. The third angle is for placement on a subwoofer or a table. This is ideal for drummers who want the monitor on a sub or anyone who works with electronics on a table and wants near-field monitors they can put on their work surface to aim them in the right direction. There's one more placement angle for the CCM-MK3 to be used as a monitor in the straight ahead placement.

The CCM-MK3 has a pole socket that allows it to be used on a stick above a sub or on a tripod for DJ monitors or stage side-fills. While it's not strictly a "monitor" position, the CCM-MK3 can also be used as a front-fill on the stage edge or on that center-cluster subwoofer array. And when you need a monitor mounted to the wall or to the ceiling, the CCM-MK3 has M10 fly-points. The internally reinforced fly-points can also be used to attach the CCM-MK3 to a wall or ceiling mounted bracket.

12 = 12" woofer with a 3" voice coil delivers the low frequencies. A 3" coil, 1.4" throat compression driver firing through the center delivers the highs. The cone of the woofer serves as an extension of the machined aluminum conical horn that comprises the woofer's pole piece, making it possible to generate high output from a very small total surface area. Both share a common Neodymium motor structure and a cast aluminum basket. The woofer is housed in a sealed Birch enclosure to provide extendable frequency response, consistent phase response and tight transient response.

MK3 = Completely integrated processing. Eight on-board presets allow for a variety of configurations at the touch of a button. The on-board presets provide a variety of settings that are optimized for floor-monitor duty, including settings that account for the boundary loading at each wedge angle as well as settings to extend LF output with limited SPL and to maximize SPL when used with a subwoofer. The proprietary BASSBOSS processing ensures exceptional sound quality thanks to its premium quality, high-fidelity electronics. Its ultra-low noise CODECS, 96kHz sampling rate processor and high-resolution amplification are some of the finest in the industry.

Powered Loudspeaker = The amplifier in the CCM-MK3 features a Class D SMPS with PFC, providing two channels, 900W LF and 300W HF. Yes, this is a bi-amped wedge. The sealed enclosure provides the flexibility to choose between low-frequency extension or high-SPL operation from the same compact loudspeaker. BASSBOSS loudspeakers are protected for safe, high-power operation. Optimized signal processing, premium quality drivers, power-matched amplification and comprehensive protections ensure that no matter the demand, they keep their cool, keep their character and keep on working.

## Quick Start Guide

---

**1** Ensure the cabinet is secure and stable, on level ground.

**4** Connect the XLR-M connector to additional subs or tops.

**2** Attach any poles/additional mid-high cabinets to the subwoofer.

**5** Connect the mains power and verify the "Ready" LED is lit.

**3** Connect the signal cable via the XLR-F input.

# Combining Speakers

---

BASSBOSS systems are easy to set up quickly. The best possible results are achieved consistently because of the integrated nature of the designs. All BASSBOSS loudspeakers are complete, integrated systems, featuring the cabinet, transducer, amplifier and a comprehensive suite of processing. Setup is particularly easy because the products integrate with each other.

**Provided the cabinets are physically aligned, any BASSBOSS sub can be combined with any BASSBOSS top and their outputs will be phase-coherent.** This means no cancellations and no gaps in the response at the crossover frequency, regardless of which preset is selected.

**The on-board BASSBOSS processing allows for the following:** Any BASSBOSS powered subwoofer can be combined with any other BASSBOSS Powered subwoofer and their outputs will sum coherently. (i.e. in phase with each other.)

**Any BASSBOSS powered subwoofer or combination of BASSBOSS powered subwoofers can be combined with any BASSBOSS powered top and their outputs will sum coherently through the crossover region.**

**HOWEVER only one model of top should be used at a time.** An assortment of different tops cannot be stacked together and still achieve coherence and clarity. Putting tops of similar or different models not designed for side-array usage next to one another creates comb-filtering and significantly degrades sound quality.

## The following tops should be used individually, i.e. should NOT be arrayed

### AT312

(Co-axial point-source top)

### DiaMon

(Co-axial point-source satellite)

### SV9

(2-way monitor with Satellite mode)

## The following tops can be used in arrays

### MFLA

(Medium Format Line Array, up to 20 cabinets can be arrayed)

### AT212

(Horizontally arrayable when necessary)

### DV12

(Arrayable in PAIRS ONLY with the upper box of the pair inverted.)

# Outboard Processing Warning

---

Third-party outboard processing (Drive Racks, etc.) are not recommended and are not necessary with BASSBOSS MK3 series powered loudspeakers. Outboard processing will not improve, and will very likely degrade the sound quality, reliability and output capacity. Using external processing inappropriately can cause driver damage that is not covered by warranty.

The internal processing can accomplish everything an external processor could accomplish without degrading the sound quality and without putting components at risk. Before considering using an outboard processor, contact BASSBOSS customer service with your use-case scenario for assistance in setting up the internal processing to achieve your goals.

Check out the Knowledge BASS at [help.bassboss.com](http://help.bassboss.com) for more information on external processing.

## Setup Procedure

---

Once the cabinet is in the desired location, balanced signal cables should be connected via the XLR-F input. It's highly recommended to run balanced signal cables to minimize the chance of noise and ground-loop hum. **The incoming signal should be unprocessed because all the necessary processing is done in the built-in DSP.** The signal should be run directly from the outputs of a mixer or controller.

The XLR-M connector provides a full-range, unprocessed, pass-through connection to additional cabinets. This output can be connected to additional subs or tops. Up to 12 cabinets can be connected on a single output from a mixer or controller.

**Connecting the mains power** The power connector is a Neutrik PowerCON TOP waterproof type. The power connector inserts with the silver tab rotated counter clockwise from vertical, at about the 1000 position and once inserted rotates clockwise to the 1200 position to lock in place. Once locked, this connector is waterproof.

**This connector also serves as the power switch. To disconnect and remove the connector, pull back on the silver tab to unlock it and rotate it counter clockwise. Once rotated to the insertion angle, the connector can be removed.**

When connecting and disconnecting, no force should need to be applied. If the connector doesn't insert and rotate smoothly, either it's in the wrong position or it's damaged and should be replaced.

**Always use a grounded outlet.** The supplied power cord includes a standard grounding NEMA 5-15 (Edison) 120-Volt US wall plug. **In unfamiliar locations it's recommended to verify the correct wiring of outlets before powering your system.**

It's highly recommended to connect all signal and power cords to the speakers before plugging the power cords into mains outlets. When your speaker is powered on, you'll see all the indicator lights turn on and then show the system's current status.

## Operation & Controls

---

There are 2 controls on the amplifier.

### 1 Input

This knob adjusts the input level from -72dB to -0dB. To avoid distortion and clipping, make sure the input signal doesn't exceed +22dB and the output doesn't reach clipping before you achieve the desired sound level.

While the amplifier has built-in limiters and safety features to protect itself and the speaker, it can't protect the speaker from distorted incoming signals. The amplifier will simply amplify the clipped signal, which can do the same damage as clipping an amplifier. Since it's essentially impossible for these amplifiers to clip, signal-level clipping is the most common cause of damage to the speaker.

### 2 Preset Select

Pressing the Preset Select button cycles through presets 1-8, and pressing it again after preset 8 returns to preset 1.

Each preset includes all necessary low-pass and high-pass filters at the selected frequencies and all the necessary alignments to maintain phase coherence in the crossover range when used with other BASSBOSS powered speakers.

Presets help you fine-tune the balance between the subwoofers and top speakers. More details on the different combinations are on page 9.

**If you hear distortion, lower the input level right away. While rare, distortion can happen, and if the signal is clean this indicates the driver has reached its physical capabilities.**

# Indicator LEDs

---

## Indicator LEDs – Left side, bottom to top

**Ready** Power is on and the system is ready to play.

**Signal** Input signal is present.

**-12dB** 12dB of headroom remaining before reaching maximum output.

**-6dB** 6dB of headroom remaining before reaching maximum output.

**Limiting** A channel is reducing the incoming signal level to prevent overdrive.

**Overheat** The amplifier is reducing output to prevent shut-down from overheating.

**Protect** The amplifier is shut down due to a condition that could cause damage.

**The Protect LED also is engaged when the system has been muted via the software.**

**Comm Link** Indicates communication is active on the LAN connection(s).

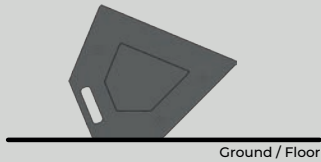
## Indicator LEDs, Right Side, Bottom to top

### Presets 1-8

The illuminated LED indicates the corresponding preset is loaded.

# How to Use the Presets

1.

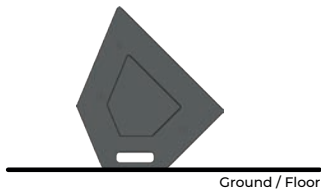


## Position 1 -

Ideal for Standing Performers, use :

- Preset 1 (Full-Range)
- Preset 4 (High-passed)

2.

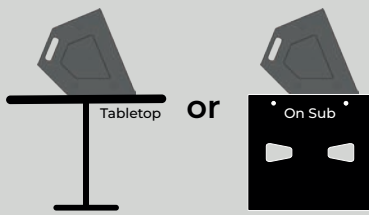


## Position 2 -

Ideal for Seated Performers, use :

- Preset 3 (Full-Range)
- Preset 4 (High-passed)

3.

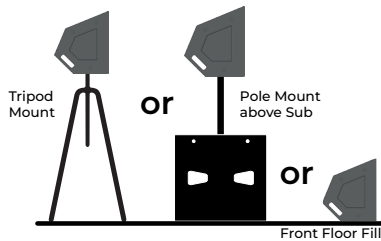


## Position 3 -

Ideal for Tabletop Placement or for placement on a Subwoofer as a Drum Monitor, use :

- Preset 5 (Full-Range)
- Preset 6 (High-passed)

4.

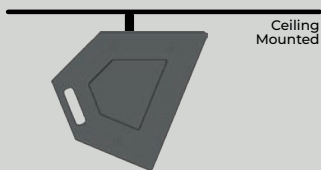


## Position 4 -

For Tripod Placement, For Pole Mounting above a sub, or For Front Fill, use :

- Preset 7 (Full-Range)
- Preset 8 (High-passed)

5.

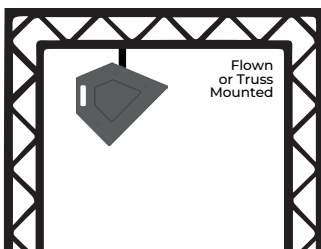


## Ceiling Mounting -

For Ceiling Mounting, use :

- Preset 5 (Full-Range)
- Preset 6 (High-passed)

6.



## Flown or Truss Mounted -

For Flown or Truss Mounted, use :

- Preset 7 (Full-Range)
- Preset 8 (High-passed)

# Pre-Installed Onboard Presets

---

All presets include phase compensation for integration with BASSBOSS subwoofers.

Preset 1	Standing Performer*
Preset 2	Standing Performer, max SPL
Preset 3	Seated Performer*
Preset 4	Seated Performer, max SPL
Preset 5	Tabletop full-range*
Preset 6	Tabletop Max SPL (use on or with sub(s))
Preset 7	Straight Forward Full Range*
Preset 8	Straight Forward Max SPL (use with sub(s))

All Max SPL presets are compatible with all BASSBOSS subwoofer models

Additional presets are accessible through software.  
See “How to Use the Presets” section for more information.

In order to achieve the flattest and smoothest frequency response, you should match the levels of your BASSBOSS subs and tops, and the low-pass filter frequency selected on the Subwoofer(s) should be closely matched to the high-pass filter frequency selected on the Top(s).

On the other hand, if you like your system to be bass-heavy, and you plan to turn your subs up louder than your tops, you may want to choose a preset on the tops with a high-pass frequency that’s slightly above the frequency chosen on the subs. This will reduce the chance of an output peak in the crossover/overlap range and will allow slightly more output SPL from the tops.

## IMPORTANT - Update NOW!

### ControlBASS + Settings

For improved performance and stability, update your settings immediately after opening your new gear!

Major new updates are available.

Download new settings updates and the ControlBASS app at [bassboss.com/software](http://bassboss.com/software)

Instructions on using the software, linking to your computer for remote monitoring and control and updating the settings files will be provided when you sign up!

Register your gear  
[bassboss.com/support](http://bassboss.com/support)

For more information and setup tips on how to get the best and most out of your system check out the Knowledge BASS [help.bassboss.com](http://help.bassboss.com)

# Power Distribution

---

Connect no more than one 5000W or two 2500W subwoofer amplifiers to a single 20A circuit. If you need to share circuits don't exceed two BASSBOSS single-driver subwoofers or one double-driver subwoofer along with one or two top speakers on the same circuit.

Although amplifiers for tops and subs may be specified to have the same power capacity, amplifiers used for tops applications tend to draw significantly less current. Subwoofers draw far more current than tops due to the demands for level and the duration of the notes.

The amplifiers can operate on mains supply from 100 to 250VAC. To connect to voltages other than 120V, a different mains connector plug must be used. Contact your salesperson for information about purchasing cables for alternate voltages.

Pass-through Power connections can be used to power additional cabinets. With optional True 1 TOP cables, power can be linked between subs and tops. Do not connect equipment that will draw more than 15A on a single power outlet. Contact your salesperson for information about linking power cables.

Avoid powering all subwoofers on the same circuit. Instead, use separate circuits for each subwoofer and top speaker combo to help prevent overloading a single circuit and tripping a breaker.

# Troubleshooting

---

If, after following the previous instructions for setup, you have no output from the loudspeaker

## **Verify that the green Ready LED is lit. If NOT lit, check the following**

1. Is the power cord plugged into a live outlet?
2. Is the Neutrik powerCON connector rotated into the locked position?

## **If the green Ready LED is lit, check the following**

1. Is the red Protect LED illuminated? The unit may be in protect mode or set into mute via software.
2. Is the signal cable connected to the input?
3. Is the signal cable connected to an operating output at the other end?
4. Is there signal flowing to the input? Check the integrity of the cable against a different cable.
5. Is the volume knob turned all the way down or at a very low level?
6. Is the signal flowing to the input full-range?

***Filters in the signal may remove the operating frequencies of the loudspeaker receiving them.***

7. If you're connected via LAN, check the level and filter settings in the software.

# Specifications

---

## Acoustical

Loudspeaker Description	2-way active 12" monitor with presets for full-range and mid-high operation
Frequency Response ( $\pm 3$ dB)	50Hz - 19kHz (Full Range - Preset 1)
Maximum Measured SPL	123 dB 1m (full-space)
Max calculated SPL (Peak)	126 dB 1m (full-space)
Nominal Dispersion ( $H^\circ \times V^\circ$ )	80 x 80 (Conical)

## Electrical

Amplification	1200 W Class D, 2 Channel
Processing	Integrated comprehensive DSP provides all necessary high-pass and low pass filters, equalization, phase alignment and limiting
Electrical Input Connector, Amp	Neutrik powerCON True 1 TOP input and pass-through
Electrical Connector, Mains	USA 3-pin grounding 120V electrical plug NEMA 5-15; Outside USA alternate connectors provided
Voltage Operating Range	100 - 240V AC, 50-60Hz (Auto-sensing, auto switching universal supply)
Current Draw, Nominal	120V 1.4A (nominal); 240V 0.7A (nominal)
Signal Input Connector	XLR-F
Signal Output Connector	XLR-M (pass-through only)
LAN Connectors	EtherCON RJ45 (x2) with 2-port Ethernet switch

## Physical

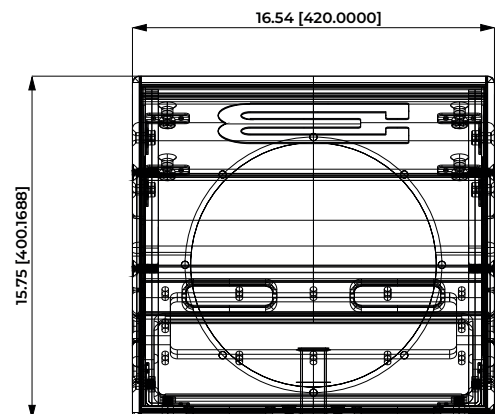
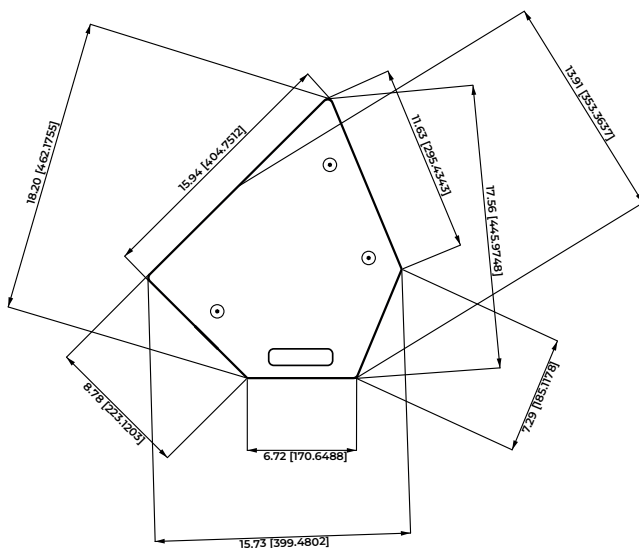
Enclosure Type	Sealed direct radiating low-frequency section and co-axially horn-loaded high-frequency section
Transducer (Low Frequency)	1 x 12 in. diameter (300 mm) neodymium motor woofer with 3 in. (76mm) copper voice coil

<b>Transducer (High Frequency)</b>	3 in. (76mm) diaphragm compression driver on 1.4 in. throat 80-degree conical horn
<b>Cabinet Construction</b>	15 mm Birch plywood, dado joinery. Equipped with a 35mm steel pole socket
<b>Dimensions (HxWxD)</b>	14 in. (35.5cm) x 14 in. (35.5cm) x 11 in. (28cm)
<b>Net Weight</b>	30 lbs (13.5kg)
<b>Shipping Weight</b>	35 lbs (16kg)
<b>Exterior Finish</b>	Black weatherproof bonded high-pressure polyurea
<b>Grille</b>	Perforated, powder-coated steel with hydrophobic cloth liner
<b>Pole Socket</b>	35mm steel
<b>GLL/Ease File</b>	<a href="http://help.bassboss.com/portal/en/kb/articles/bassboss-ease-gll-files">help.bassboss.com/portal/en/kb/articles/bassboss-ease-gll-files</a>

## Optional

<b>Cover</b>	Heavy-duty padded nylon transport cover and carrying bag
<b>What's Included</b>	Loudspeaker, 15' (5m) Power Cable, Manual, Warranty Card

Our proactive philosophy causes specifications to be subject to change whenever improvements are made.



# Warranty

---

**WARRANTY INFORMATION | Our fully-transferable warranty covers all BASSBOSS products.**

## **STANDARD CABINET WARRANTY**

BASSBOSS loudspeaker cabinet integrity, including all joinery, fasteners, handles and wood, is warranted against defects in materials and workmanship for a period of six (6) years from the date of purchase. This warranty does not cover items that are intended to wear and can be replaced if worn or damaged. Examples of items not covered by this warranty are cabinet feet, grilles and the finish or coating applied to the cabinet.

## **ENHANCED COMPONENT WARRANTY**

BASSBOSS amplifiers and electronic components are covered against failures due to defects in materials and/or workmanship for a period of three (3) years from the date of purchase.

## **TRANSDUCER WARRANTY**

Transducers are covered against failures due to defects in materials and/or workmanship for two (2) years from the date of purchase.

## **WARRANTY SUPPORT**

Warranty support is a service, and part of that service includes helping you prevent failures and minimize repair and shipping costs. Please contact BASSBOSS immediately if you observe an issue.

Please do not ship products without obtaining a return authorization number (RMA) by contacting BASSBOSS at [bassboss.com/support](http://bassboss.com/support). **If you need to ship your speaker for service, BASSBOSS technicians will provide assistance on shipping and packaging requirements specific to your service needs.**

## **WARRANTY LIMITATIONS**

During the warranty period, if your loudspeaker malfunctions or fails due to any defect in components or manufacturing, the failed parts will be repaired or replaced. This warranty does not extend to damage resulting from improper installation, misuse, neglect or abuse. Warranty coverage and eligibility will be determined upon inspection by BASSBOSS personnel. This warranty does not cover labor other than that authorized and performed by BASSBOSS personnel. Service will be performed upon the return of the failed unit, together with its original sales receipt or other proof of purchase, to BASSBOSS or an Authorized Service Facility. Purchaser is responsible for all costs of shipping and handling. Cosmetic damage is specifically excluded from this warranty. This warranty is rendered void if service, repairs and/or modifications are attempted or made by anyone not specifically authorized by BASSBOSS to perform said services. ***Please contact BASSBOSS or your local BASSBOSS dealer before attempting any repairs and before shipping parts in for service.*** This warranty gives you specific legal rights, and you may also have other rights, which vary from state to state.

# Safety Information

---

## **Important information regarding safety and the use of your loudspeakers**

To prevent potentially dangerous exposure to high levels of acoustic pressure never stand in the immediate vicinity of loudspeakers driven at a high level without hearing protection. Professional loudspeaker systems are capable of causing sound pressure levels detrimental to human health. When a transducer capable of producing high sound levels is being used it is necessary to wear ear plugs or protective earphones to prevent hearing damage.

Even seemingly non-critical sound levels (from approximately 95 dB SPL) can cause hearing damage if people are exposed to it over a long period. Anyone exposed to these levels should use appropriate hearing protection devices. System and venue owners and operators are encouraged to make hearing protection devices available to all customers and staff members.

## **Warning:**

In order to prevent accidents when setting up the loudspeakers or loudspeaker stands, make sure they are standing on a firm surface. Ensure that all hardware, fixings and fasteners used for installation or mobile deployment are of an appropriate size and load safety factor. Use only the factory installed, internally secured M10 fly points when suspending cabinets above the ground. Use only appropriately load-rated hardware. When suspending cabinets from their fly-points, use at least 4 (four) of the fly points on the cabinet and always attach to multiple points of the supporting structure. Pay attention to these instructions and follow the relevant safety guidelines in your area. Always use hardware that is approved for overhead lifting.

Check the security/tightness of all load-bearing fasteners regularly. Check all hardware for visible signs of wear and tear. Replace them when necessary. Not all models include these fly points. If your cabinet does not include these fly-points, it is not intended to be flown. Never hang loudspeakers from handles. Never drill or screw into cabinets to attach lifting points.

Only use included, factory installed, internally secured M10 fly points when supporting cabinets. (Not all models include these fly points.) Only use appropriately load-rated hardware. Never hang loudspeakers from handles. Never drill or screw into cabinets to attach lifting points.

Pay attention to the manufacturers' instructions and to the relevant safety guidelines. Regularly check the loudspeaker housings and accessories for visible signs of wear and tear, and replace them when necessary. Regularly check all load bearing bolts in the mounting devices.

Caution Loudspeakers produce a static magnetic field even if they are not connected or are not in use. Therefore make sure when erecting and transporting loudspeakers that they are nowhere near equipment and objects which may be impaired or damaged by an external magnetic field. A distance of 3 feet (1m) should be maintained between loudspeakers and sensitive equipment such as CRT monitors or magnetic storage media.

Never attempt to carry out any operations, modifications or repairs that are not expressly described in this manual. Contact your dealer or BASSBOSS support if the product is not functioning properly.

The audio system must comply with current local standards and regulations regarding electrical systems. For installation purposes, BASSBOSS strongly recommends that this product be installed by a qualified, professional installer who can ensure correct installation and certify that it is installed in compliance with the regulations in force.

The audio system must comply with current local standards and regulations regarding electrical systems.

# Important Notes

---

**Shielded data cables must be used.**

**To minimize the occurrence of noise and interference, always use shielded signal cables. Avoid routing signal or data cables close to equipment that produces high-intensity electromagnetic fields such as transformers, power cables and loudspeaker wires.**

**Do not coil excess power cable. Do not coil or wrap power cables and signal or data cables together.**



**WARNING**

This is a class A product. In a domestic environment, this product may cause radio interferences, in which case the user may be required to take corrective measures.

## FCC Compliance Notice

---

**Note** This equipment has been tested and found to comply with the limits for a Class A digital device, pursuant to part 15 of the FCC Rules. These limits are designed to provide reasonable protection against harmful interference when the equipment is operated in a commercial environment.

This equipment generates, uses and can radiate radio frequency energy and, if not installed and used in accordance with the instruction manual, may cause harmful interference to radio communications. Operation of this equipment in a residential area is likely to cause harmful interference in which case the user will be required to correct the interference at their own expense.

## Manufacturer

---

**True Lee Loudspeakers | BASSBOSS 2028 E Ben White Blvd. #240-8220 Austin TX 78741**

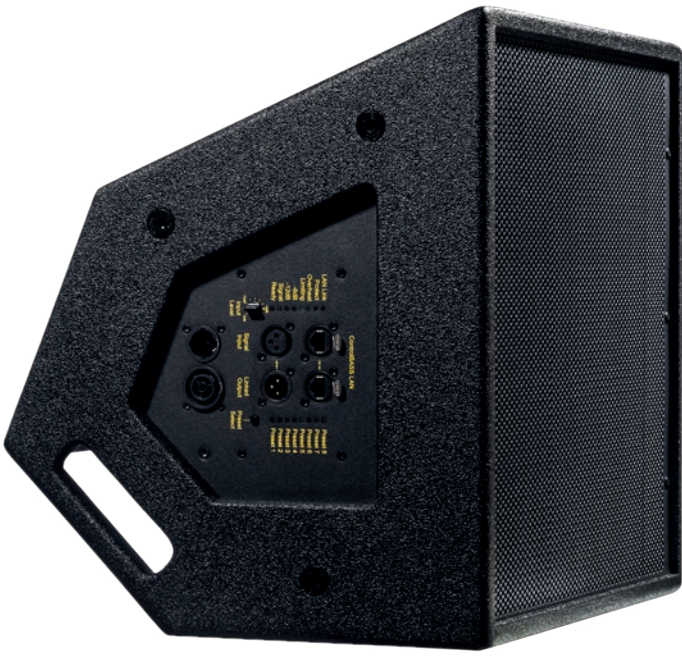
We declare, under our sole responsibility, that to the best of our knowledge to which this declaration relates, our products are in conformity with the applicable requirements.

**Product**

CCM12-MK3 Loudspeaker

**Intended use**

Professional Audio Loudspeaker



**CCM 12-MK3**

**Single 12"**  
Powered Monitor



**Need more assistance?  
We're here to help.**

[help.bassboss.com](https://help.bassboss.com)