

EV



Specs Sheet

VS21 | 21" Powered Subwoofer

VS21 | 21" Powered Subwoofer

Punchy AND Full Deep Bass ○

Very High Output SPL ○

Versatile for Dance to Acoustic ○

2400W RMS Class D Amplifier ○

Description:

The design brief for the VS21 was to create a product that offered low-frequency extension similar to the BASSBOSS vented dual 18" subwoofers in combination with the hard-hitting punch of the BASSBOSS horn-loaded subwoofers. The VS21 brings the world of extended low frequency together with the world of high-impact. You're no longer forced to choose either deep OR punchy, the VS21 offers both.

The VS21 is particularly versatile, able to satisfy the demands of hard-hitting live kick drums to the deep, rolling bass of an 808. For those whose shows span a lot of genres, the VS21 has got them all covered. The same size and shape as the Cerwin Vega L-36, the VS21 will deliver considerably much more output and deep bass.

Description

Vented, short horn hybrid single 21" powered and processed subwoofer. Frequency response ± 3 dB from 25-90Hz. Maximum continuous sine wave output 132dB.

Features

The VS21 features a massive displacement, long excursion 21" woofer, rear-loaded into a large acoustical volume that is tuned to a low frequency, and front-loaded onto a short horn. The vented enclosure section provides extended low frequency performance and the horn section provides increased upper frequency sensitivity and improved transient response.

Benefits

These features bring the benefits of extended low frequency together with the benefits of high-impact. Excellent transient response is delivered by the efficient performance of the horn at the upper end of the subwoofer range. Extended depth is delivered by the large acoustical volume, low tuning and the massive displacement of the long-excursion 21" woofer. The combination provides an immediate hit with the added power of full and effortless low-end extension. The resulting impression is one of a very 'big' or 'heavy' hit.

Thanks to these attributes, the VS21 is extremely versatile, able to satisfy the demands of hard-hitting live kick drums as well as the deep, rolling bass of heavy synth tracks or an 808. The VS21 offers output SPL comparable to a bigger double-18" cabinet and allows more output to be focused forward thanks to its smaller frontal area.

Amplification and Processing

Powered by a 2400W RMS amplifier, the VS21 includes all the necessary electronics to allow it to be connected directly to your mixer with nothing but signal cable in between. The built-in processing is minimal and includes a low-pass filter that provides a broad, flat frequency response. There is no need for any EQ in the signal. In addition, a sophisticated limiter system protects the woofer from thermal and over-excursion damage, allowing the user to get maximum output from the loudspeaker for as long as necessary without concern about overdriving it.

Arrays

For larger events, several arraying options are facilitated. Block arrays, side-by-side arrays and front/back Cardioid arrays (presets available in DSP) can be deployed securely thanks to the interlocking feet.

WWW.BASSBOSS.COM

VS21 21" Powered Subwoofer

SPECIFICATIONS

Acoustical

Loudspeaker Description:	Subwoofer, single 21" powered and processed
Frequency Response (± 3 dB):	25 - 90 Hz
Maximum Sustained Output:	132 dB SPL, 1 meter, half-space (ground plane)
Max SPL (Peak)*	139 dB
Nominal Dispersion (°H x °V):	360 x 360 - Cardioid mode available with multiple boxes

Electrical

Amplification:	2400 Watt Continuous RMS Class D Amplifier
Processing:	Integrated comprehensive DSP provides high pass, low pass, phase alignment and limiting
Electrical Connectors, Amp:	Neutrik Powercon input (blue) NAC3FCA
Electrical Connector, Mains:	Standard US 3-pin 120V electrical plug: NEMA 5-15. (Edison)
Voltage Operating Range:	90-130V
Current Draw, Nominal:	3A @ 120 volts (typical, 1/8 max power)
Current Draw, Peak:	20A
Current Draw, Continuous:	Limited to 16.5A after 1 second
Signal Input Connector:	XLR-F
Signal Output Connector:	XLR-M pass-through only

Physical

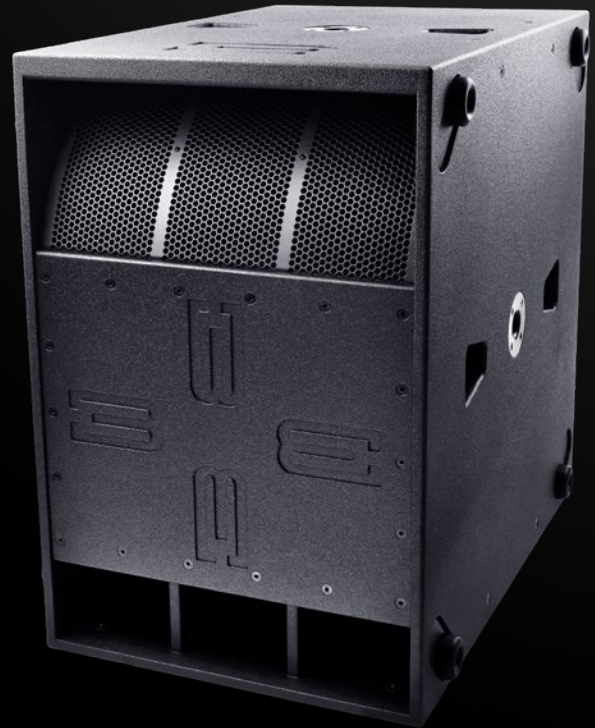
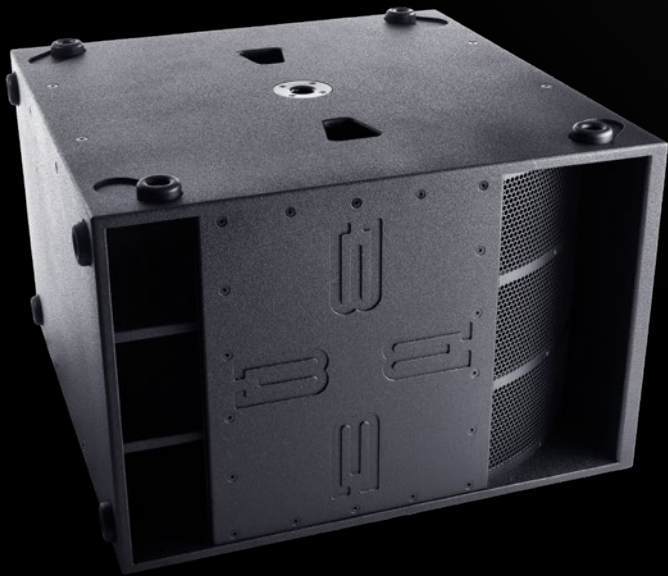
Enclosure Type:	Vented, short horn hybrid
Transducer:	One 21" diameter (540 mm) neodymium motor woofer. 58 mm (2.28") peak to peak excursion with waterproof fiber composite cone
Cabinet Construction:	18mm Baltic Birch plywood, dado joints, stainless steel hardware
Dimensions (HxWxD):	36" x 24" x 36" (91.44 cm x 60.96 cm x 91.44 cm) - 37.5" (95.25 cm) high with feet
Net Weight:	180 lbs. (82 kg)
Shipping Weight:	230 lbs. (104 kg)
Exterior Finish:	Rugged, weatherproof, black textured, bonded high-pressure polyurethane coating
Grill:	Perforated, powder-coated steel

Optional

Installation Version:	Available without handles and pole sockets
Amplification for Installation:	Complete power package including DSP in two space rack chassis
Cover:	Heavy-duty padded nylon transport covers for 1 or 2 cabinets
Transport Dollies:	Dolly cart with 4 locking casters and recesses to accept interlocking cabinet feet for transporting 1 to 3 cabinets
Online Information:	bassboss.com/vs21

*Peak output is calculated using "industry standard" techniques. These calculation methods create theoretical specifications that are inflated over what can actually be achieved. BASSBOSS real world output specifications are provided as "Maximum Sustained Output" ratings, which reflect actual measured, continuous output levels.

VS21 | 21" Powered Subwoofer



WWW.BASSBOSS.COM