

TB



Specs Sheet

DIAMON 112

12" Powered Top

DIAMON 112

12" Powered Top

Stunning Output-To-Size Ratio ○

Ultra Small Size And Lightweight ○

Consistent Off-Axis Response ○

1500 W Digital Class D Amplifier ○

Description:

The DiaMon 112 is a very compact, high-output, self powered loudspeaker. It features a 12" woofer and a co-axial 1.4" exit compression driver that plays through the center of the woofer, making it a true point-source cabinet. Both the woofer and tweeter coils share the same magnetic structure to keep size and weight to a minimum.

Because the tweeter exits through the middle of the woofer, the extra area that the tweeter would ordinarily take up on the front of the loudspeaker is eliminated, which helps make the DiaMon extremely compact. It's barely bigger than a 12" woofer but also incorporates a 1.4" exit compression driver with a 3" voice coil. The DiaMon 112 includes a 1500-watt Class D Powersoft amplifier with built-in digital signal processing, is bi-amped and has a full complement of protections, limiters and equalizers that ensure consistent, accurate and reliable operation. It is fully self-contained and needs no more than power and signal to be ready to go.

Even though the box is very small and very lightweight, there is nothing small or lightweight about its performance. This box is literally packed with the best components and technology money can buy, the whole point of which is to do more with less. The output of this little box is totally out of proportion to its size. It's extremely loud, but it's capable of being loud, not struggling to be loud. It sounds much bigger than it looks and has the ability to maintain crystal clarity even at the upper limits of its very remarkable capabilities.

The DiaMon 112 is a mid-high loudspeaker, so in order to deliver the BASSBOSS experience with full system sound it's best to combine it with a very powerful BASSBOSS subwoofer. It has the output to keep up with several subs and for system usage is intended to be mounted on a pole-stand above one or more BASSBOSS subs. Used with a subwoofer system, the DiaMon is an extraordinarily size-conscious and yet very powerful main speaker.

Any speaker that has the tweeter horizontally or vertically offset from the mid-frequency driver produces very different response as one moves through its coverage area from the tweeter side to the woofer side. This is due to the different distances the sound has to travel to reach the ears. Due to the co-axial construction the path length difference between lows and highs is the same in any direction, allowing extremely consistent off-axis response regardless of which direction you move away from directly on center.

The DiaMon 112 has a unique angle-cut corner that allows it to be placed on a table and used as a DJ monitor without pole-mounting. It also has a securely attaching threaded pole-mounting system for when it is used attached to a socket-equipped BASSBOSS subwoofer or on a similarly equipped tripod stand. An adjustable mount bracket is also available for alternative placements and for permanent installations on walls or ceilings.

As a main speaker, the DiaMon 112 can be used with two double 18" subwoofers and deliver all the mid-high you need to keep up with them. As a DJ monitor it provides tight, punchy performance and doesn't distort at high levels. As a live reinforcement speaker, this versatile box provides consistent sound quality over a wide dispersion pattern with excellent resistance to feedback.

DIAMON 112 ^{12"} Powered Top

SPECIFICATIONS

Acoustical

Loudspeaker Description:	12 inch co-axial, bi-amplified, self-powered Top
Frequency Response (±3 dB):	80 – 18,000 Hz
Maximum Sustained Output:	123 dB SPL, 1m, 2pi, half-space
Max SPL (Peak)*	133 dB
Nominal Dispersion (H° x V°):	80 x 80 (Conical)

Electrical

Amplification:	1500 Watt 2 Channel Powersoft Class D Amplifier
Processing:	Integrated comprehensive including high-pass, low-pass, parametric EQ, phase alignment and limiting
Electrical Connectors, Amplifier:	Neutrik powerCON Input (Blue) NAC3FCA
Electrical Connector, Mains:	Standard US 3-pin 120V electrical plug: NEMA 5-15 (Edison), NEMA 5-15 (Edison) or powerCON loop through jumper for use above subwoofer on request
Voltage Operating Range:	90-250V. Auto-sensing, auto-switching, PFC universal power supply
Current Draw, Nominal:	432 W, 3.6A @ 120 Volts (typical, 1/8 max power)
Signal Input Connector:	XLR-F
Signal Output Connector:	XLR-M (pass-through only)
Controls:	Rotary Level Control with adjustment from Off to +12dB, Push-button Preset Select
Display:	LEDs for Power/ready, Signal, Clip and Protect. LED indicating selected preset

Physical

Enclosure Type:	2-way mid-high. Direct radiating vented 12" LF, co-axial horn-loaded HF
Transducer (Low Frequency):	1 x 12" diameter (300 mm) neodymium motor woofer with 3" (76 mm) copper winding voice coil
Transducer (High Frequency):	1 x 3" (76 mm) diaphragm compression driver on 1.4" throat concentrically mounted wave guide
Cabinet Construction:	16 mm Baltic Birch plywood. Equipped with an integrated handle and a 35 mm pole socket mount with M20 threaded insert
Dimensions (HxWxD):	14" x 14" x 11.5" (35.56 cm x 35.56 cm x 29.21 cm)
Net Weight:	30.6 lbs. (14 kg)
Shipping Weight:	36 lbs. (16 kg)
Exterior Finish:	Rugged, weatherproof, black textured, bonded high-pressure polyurethane coating
Grill:	CNC Waterjet cut 1/8 inch aluminum over Black perforated, powder-coated steel
Pole Sockets:	1 (35 mm, M20 threaded insert)
Handles:	1 Integrated Handle

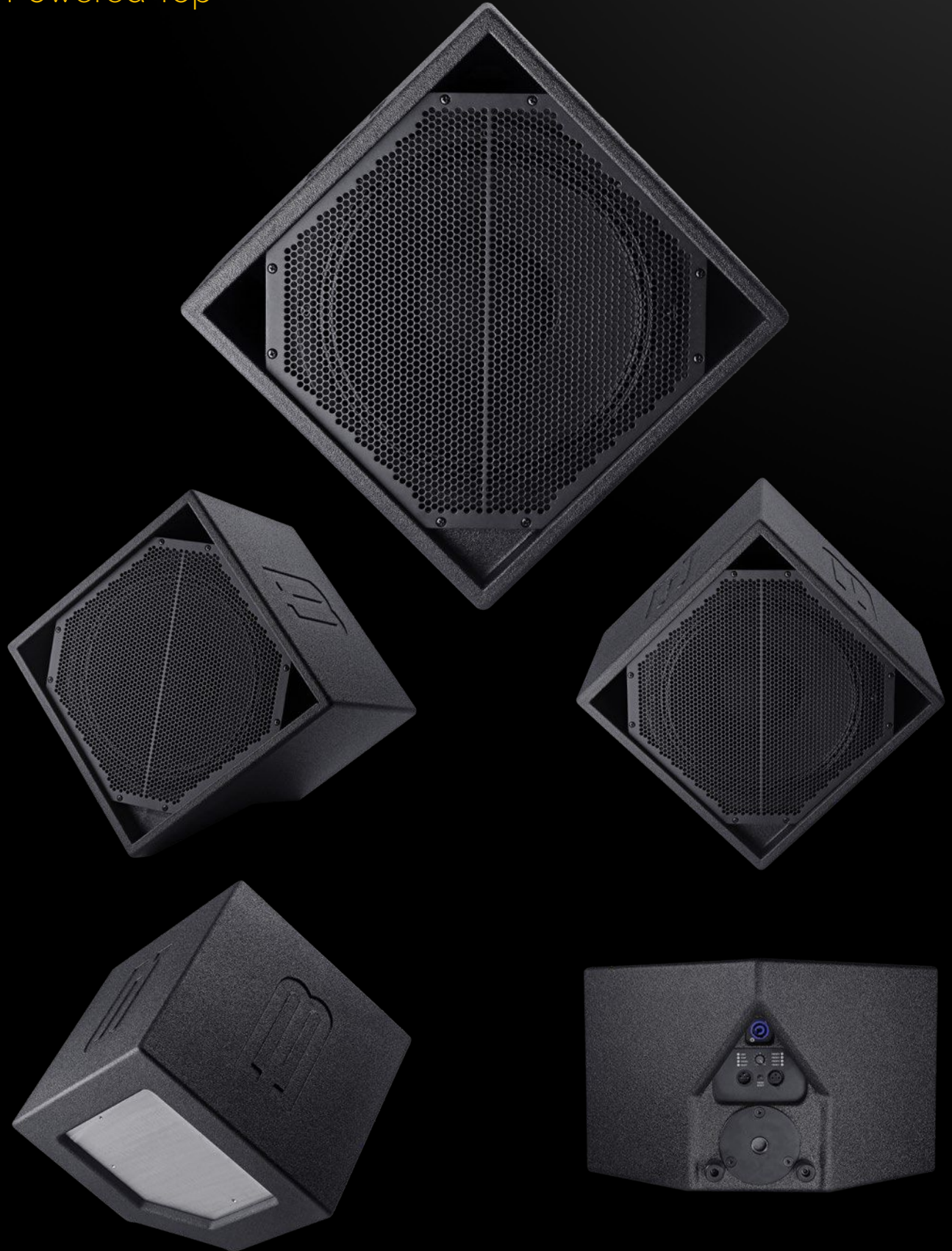
Optional

Pole Options:	Threaded Pole for DiaMon 112, CCM112 – 26" length and 48" lengths available
Stand:	35mm Pole Stand – Supports loudspeaker above subwoofer equipped with pole socket; Tripod Stand – Supports loudspeaker from ground
Mounting Brackets:	Wall, Ceiling and Desk Mount options
Covers:	Heavy-duty padded nylon transport cover with carrying handles
Faceplate:	Special Edition Custom Chaos Grill (No Charge)
Online Information:	bassboss.com/diamon112

**Peak output is calculated using "industry standard" techniques. These calculation methods create theoretical specifications that are inflated over what can actually be achieved. BASSBOSS real world output specifications are provided as "Maximum Sustained Output" ratings, which reflect actual measured, continuous output levels.*

DIAMON 112

12" Powered Top



WWW.BASSBOSS.COM